

CLAIM A FREE & NON-DISRUPTIVE IBM i SECURITY SCAN IN A FEW SIMPLE CLICKS

HOW SECURE IS YOUR IBM i ENVIRONMENT?

Unlock visibility and insight in the state of your IBM i system today with a free scan from Tectrade - including a top-level assessment of vulnerabilities and access to our specialists when you run a report.

In collaboration with key security partner, Forta, Tectrade is offering a Security Scan to businesses running IBM i environments. Where data security is a high priority for global organizations, and the complex threat landscape is always evolving, our security scan can quickly garner statistics on things such as:

- Security system values
- User profile special authorities
- Password policy rules
- Exit program registration
- System auditing settings
- Public authority to libraries
- Anti-Virus / Malware controls

IBM i

IBM

Platinum Partner

FORTRA

HOW IT WORKS

Working closely with our experts, we support you to run a quick, **10-minute vulnerability assessment** of your IBM i environment. It's designed to be simple and easy, so you can focus on a meaningful conversation about security.

Our scan "interprets" the security of your environment, making it easy to see and navigate the results during a follow-on discussion. At no cost, a Tectrade specialist will arrange a virtual call to explore the report findings with your team (typically taking one hour).

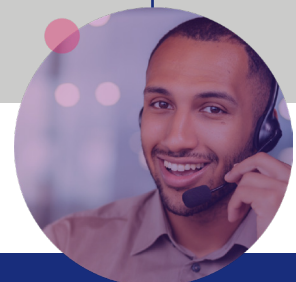
Results will be confidential, so you can use it at your discretion.

Some customers have used this scan as the foundation for future security planning and decision-making; others use scanning tools to quickly and non-disruptively identify system weakness.

RUN ASSESSMENT

VISIBILITY OF CONCERNS

RECOMMENDATIONS



GROW



SAVE



INNOVATE



PROTECT

HOW OUR SCAN BENEFITS YOUR BUSINESS

- Educate your business on server security vulnerabilities and misconfiguration
 - Cost-justify deeper assessment and analysis into your organization's security
 - Keep on top of your IBM i investment, ensuring it remains secured as external threats evolve
- Receive a free executive summary of recommendations and options for services to address any security gaps we identify

SECURITY SCAN FAQs

Discover the most frequently asked questions about our security scan, including eligible IBM i versions, and what to expect *during* and *after* the scan.

Common Questions We Ask During the Scan

Before we scan your systems, our experts might ask questions about your current environment in order to accurately determine the state of your security.

- What is the role of the IBM i Server at your organization?
- How many servers/LPARs are in your environment and are you doing replication today?
- Are you running 3rd party or homegrown applications?



What happens after the Security Scan Review?



We share an Executive Summary of Recommendations

If you require a more granular view, there is a deeper security assessment

Depending on your level of vulnerability, we might recommend our Security Starter Bundle(s)



Start your free, non-disruptive scan in a few clicks!

SECURITY SCAN AT A GLANCE

QUICK - Our security scan will take you only moments to run.

EASY - Imagine scanning your IBM i environment in under 10 minutes and without headache? Our scan is just that: simple and easy to run.

CONFIDENTIAL - No one wants to advertise their security gaps or tools. Our scan report is yours to action once complete.

NON-DISRUPTIVE - Run a scan without interrupting the daily operations that keep your business ticking.

Tectrade Computers Corporation

8480 Honeycutt Road
Suite 200
Raleigh, NC 27615

CONTACT INFO

info@tectrade.com
www.tectrade.com